



Maxforce®

FC ANT KILLER

Bait Gel

FOR USE IN COMMERCIAL, INDUSTRIAL AND RESIDENTIAL AREAS

ACTIVE INGREDIENT: Fipronil*.....0.001%

OTHER INGREDIENTS:.....99.999%

Total:.....100.000%

CAS NO. 120068-37-3

EPA Reg. No. 432-1264

EPA Est. No. 071106-GA-003

KEEP OUT OF REACH OF CHILDREN

CAUTION

See back and side panels for complete Precautionary Statements, Hazards, Directions for Use and additional instructions.

This product controls a broad spectrum of ants. Thus this product controls ants including

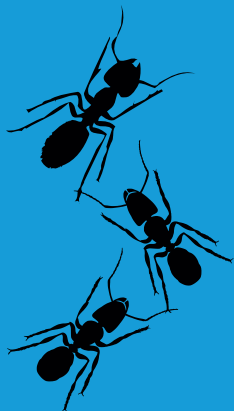
Argentine	Pavement	Acrobat	Thief	Cornfield
Pharaoh	Honey	Odorous House	Big-headed	Field

Contents: 4 Reservoirs
27g (0.95 Oz) each
Total Net Weight: 108g (3.8 Oz)

Contains 4 prefilled reservoirs for use with the MAXFORCE Bait Injector

79376049

80191448A 090507A



Use only in areas not easily accessible to children and pets. Product may stain textiles and clothing.

This product provides FAST CONTROL of ants in 3-5 days. Maxforce® FC Ant Killer Bait Gel is formulated to effectively control ants. That's because this product contains Fipronil, a fast-acting active ingredient. Its speed is still slow enough, however, for foraging ants to return to the colony and feed the bait to larvae and queen(s) so that the entire colony is killed through the Domino Effect®.

This product is formulated for effective ant control. The high moisture content of this gel enhances the bait's attractiveness to target ants. The bait's attractiveness is greatest within two weeks of application. This product is a bait product, formulated to take advantage of ant trophallaxis. Through trophallaxis, worker ants eat the bait while foraging, then feed it to the rest of the colony. The larvae digest the solid bait and produce a liquid containing the Fipronil that is fed to the rest of the colony and queen(s). This product controls a broad spectrum of ants. Thus this product controls ants including Argentine, Pharaoh, Pavement, Honey, Acrobat, Odorous House, Thief, Big-headed, Cornfield, and Field.

FIRST AID

IF SWALLOWED:

- Call a poison control center or doctor immediately for treatment advice.
- Have person sip a glass of water if able to swallow.
- Do not induce vomiting unless told to do so by the poison control center or doctor.
- Do not give anything by mouth to an unconscious person.

Have the product container or label with you when calling a poison control center or doctor or going for treatment. You may also contact 1-800-334-7577 for emergency medical treatment information.

PRECAUTIONARY STATEMENTS:

HAZARDS TO HUMANS AND DOMESTIC ANIMALS

CAUTION:

May be harmful if swallowed. Avoid contact with skin and clothing. Keep exposed gel away from open foods and food contact surfaces. Wash hands thoroughly after handling.

PHYSICAL AND CHEMICAL HAZARDS

Do not use this product in or on electrical equipment where a possibility of shock hazard exists.

STORAGE AND DISPOSAL

Do not contaminate water, food or feed by storage or disposal.

PESTICIDE STORAGE: Store in a cool, dry area out of reach of children.

DISPOSAL: If Empty: Do not reuse container. Place in trash or offer for recycling if available.

If Partially Filled: Call your local solid waste agency for disposal instructions. Never place unused product

STORAGE AND DISPOSAL (cont.)

down any indoor or outdoor drain.

For questions or comments about MAXFORCE, call toll-free 1-800-331-2867.

DIRECTIONS FOR USE:

It is a violation of Federal Law to use this product in a manner inconsistent with its labeling.

All product labeling must be in possession of the applicator. Application rate is dependent on level of infestation and species to be controlled. Bait should be applied as spots. Applications in Food/Feed Handling Establishments. Application within food/feed areas of food/feed handling establishments is limited to crack and crevice treatment only. Apply with syringe applicator or bait injector directly into cracks and crevices. Place applicator tip into cracks and crevices and where ants may travel. Apply gel (up to 1 gram) per spot. Apply bait in small amounts between different elements of construction, openings leading into voids and hollow spaces in floors, walls, ceilings, equipment legs and bases, around plumbing pipes, doors and windows, cabinets, sinks, stoves and other places where ants may enter the establishment. During follow-up visits inspect bait placements and reapply when necessary. Do not apply bait to areas where food/feed, food utensils or food processing surfaces may become contaminated. Do not apply bait in cracks and crevices of areas that are routinely washed, tops of tables, food/feed preparation and prepared food/feed holding surfaces as bait may be removed by washing. Do not apply bait to surfaces where the temperature exceeds 120° F as bait may run. Examples include, but are not limited to, portions of stoves, ovens, grills, fume hoods, heat lamps, coffee urns, steam tables, toasters, fryers, dishwashers and hot water pipes. Care should be taken to avoid depositing gel onto exposed surfaces. If gel contacts an exposed surface, remove it and wash exposed surface.

Food/feed areas include areas for receiving, storage, packing (canning, bottling, wrapping, boxing), preparing edible waste for storage, and enclosed processing systems (mills, dairies, edible oils, syrups). Serving areas are also considered a food area when food is exposed and facility is in operation. Application of this product in food/feed areas of food/feed handling establishments after then as a crack and crevice instrument is not permitted.

Directions for using the Maxforce Bait Injector, loading reservoirs and operation: With the teeth of the drive rod facing up, pull the drive rod all the way back. Attach ant gel reservoir to the bait injector with a twist-locking mechanism. Remove the reservoir outlet cap and attach the dispensing tip. Push the drive rod until the drive plunger seats against the piston in the reservoir of gel. Turn drive rod knob until teeth are facing down. Gently squeeze the trigger until the gel flows out. Reservoirs that still contain gel can be sealed with the end cap for future use.

Directions for changing reservoirs: With the arrow on the drive rod pointing up, pull the drive rod out as far as it will go. Remove the empty reservoir, wrap and place in the trash can. Reservoirs that still contain gel can be sealed with the

outlet cap for future use. To attach a new reservoir of gel follow the above directions.

1. To apply gel: Remove cap from tip—or break off, touch tip to surface and depress plunger. Recap after use.
2. Apply gel in spots in cracks and crevices. For best results, make 2- or 3-place many spots or dabs of gel where you see ants foraging and entering the structure.
3. Do not apply the gel to areas which have been recently sprayed with insecticide or contaminated with foggers and do not spray insecticide over gel as this may cause the bait to become repellent. Do not apply gel to areas that are routinely washed, such as counter tops, as gel will be removed or diluted and spread onto the surface. If you have recently sprayed, remove the dead ants and thoroughly clean the area before applying the gel.
4. Place the bait as follows: Gel can be placed in cracks, crevices, corners and any out of the way place, such as under and behind kitchen appliances, along baseboards, under sinks, in pantry, around pipes and water heater, window and door frames, and in the garage, attic, or craw space.

REFILLABLE STATIONS: Maxforce FC Ant Killer Bait Gel may be placed into refillable bait stations designed for interior or exterior/perimeter use; when placing bait in the station, do not exceed the capacity of the station's reservoir. Close bait station securely after application. During follow up visits inspect placements and reapply as needed.

For best results, place stations near ant trails, nest sites, where ants are actively foraging or suspected areas of ant activity. Stations may also be placed along fence lines and property lines to intercept foraging ants entering the property.

FOR INDOOR USE:

Visually inspect for ants and place bait in areas of known or suspected ant activity. Place bait along foraging trails and into nest sites. A careful inspection will help to identify sites suitable for bait placement. Apply bait in small spots or beads into cracks, crevices, holes or other small openings where ants travel including: wall voids, cracks and crevices in kitchen, bathroom under sink, window sills, screen vents, garage, attic, and crawl spaces. Do not treat food preparation surfaces.

OUTDOOR USE:

Place gel outdoors into, on or adjacent to structures where you see ants, next to ant trails and suspected areas of ant activity. Likely locations for ants and gel placements are points of entry into structure and areas with potential water damage including eaves, soffits, weep holes, where wires and pipes come into the building structure, trees, stumps, roots, wood decks, fences, planter boxes, woodpiles, landscaping, and railroad ties. Extreme heat or cold, direct sunlight and water may reduce the residual effectiveness. You will notice fewer ants in days —or— Pest population reduction will be apparent within a week.

IMPORTANT: READ BEFORE USE

Read the entire Directions for Use, Conditions, Disclaimer of Warranties and Limitations of Liability before using this product. If terms are not acceptable, return the unopened product container at once.

By using this product, user or buyer accepts the following Conditions, Disclaimer of Warranties and Limitations of Liability.

CONDITIONS: The directions for use of this product are believed to be adequate and must be followed carefully. However, it is impossible to eliminate all risks associated with the use of this product. Crop injury, ineffectiveness or other unintended consequences may result because of such factors as weather conditions, presence of other materials, or the manner of use or application, all of which are beyond the control of Bayer CropScience LP. All such risks shall be assumed by the user or buyer.

DISCLAIMER OF WARRANTIES: TO THE EXTENT CONSISTENT WITH APPLICABLE LAW, BAYER CROPSCIENCE LP MAKES NO OTHER WARRANTIES, EXPRESS OR IMPLIED, OF MERCHANTABILITY OR OF FITNESS FOR A PARTICULAR PURPOSE OR OTHERWISE, THAT EXTEND BEYOND THE STATEMENTS MADE ON THIS LABEL. No agent of Bayer CropScience LP is authorized to make any warranties beyond those contained herein or to modify the warranties contained herein. TO THE EXTENT CONSISTENT WITH APPLICABLE LAW, BAYER CROPSCIENCE LP DISCLAIMS ANY

LIABILITY WHATSOEVER FOR SPECIAL, INCIDENTAL OR CONSEQUENTIAL DAMAGES RESULTING FROM THE USE OR HANDLING OF THIS PRODUCT.

LIMITATIONS OF LIABILITY: TO THE EXTENT CONSISTENT WITH APPLICABLE LAW, THE EXCLUSIVE REMEDY OF THE USER OR BUYER FOR ANY AND ALL LOSSES, INJURIES OR DAMAGES RESULTING FROM THE USE OR HANDLING OF THIS PRODUCT, WHETHER IN CONTRACT, WARRANTY, TORT, NEGLIGENCE, STRICT LIABILITY OR OTHERWISE, SHALL NOT EXCEED THE PURCHASE PRICE PAID, OR AT BAYER CROPSCIENCE LP'S ELECTION, THE REPLACEMENT OF PRODUCT.

Bayer (reg'd), the Bayer Cross (reg'd), Maxforce® and Domino Effect® are registered trademarks of Bayer.



Produced for:

Bayer Environmental Science

A Division of Bayer CropScience LP

2 T. W. Alexander Drive

Research Triangle Park, NC 27709

Product of China



**CARTON MADE FROM 100%
RECYCLED PAPERBOARD MINIMUM
35% POST CONSUMER CONTENT**



Maxforce[®]

FC ANT KILLER

Bait Gel